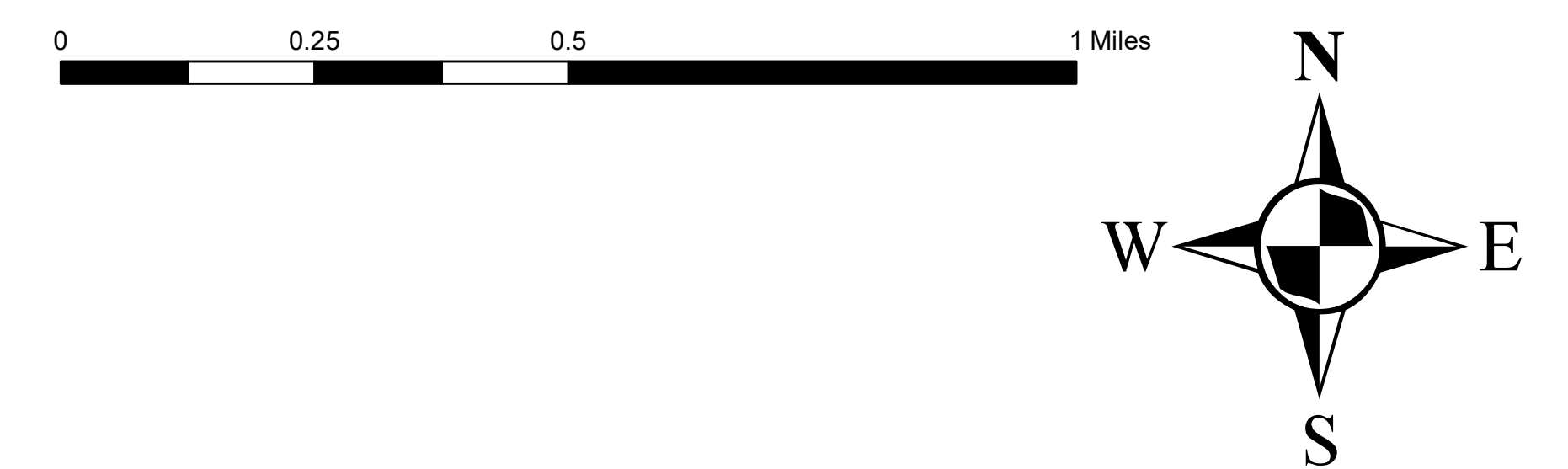
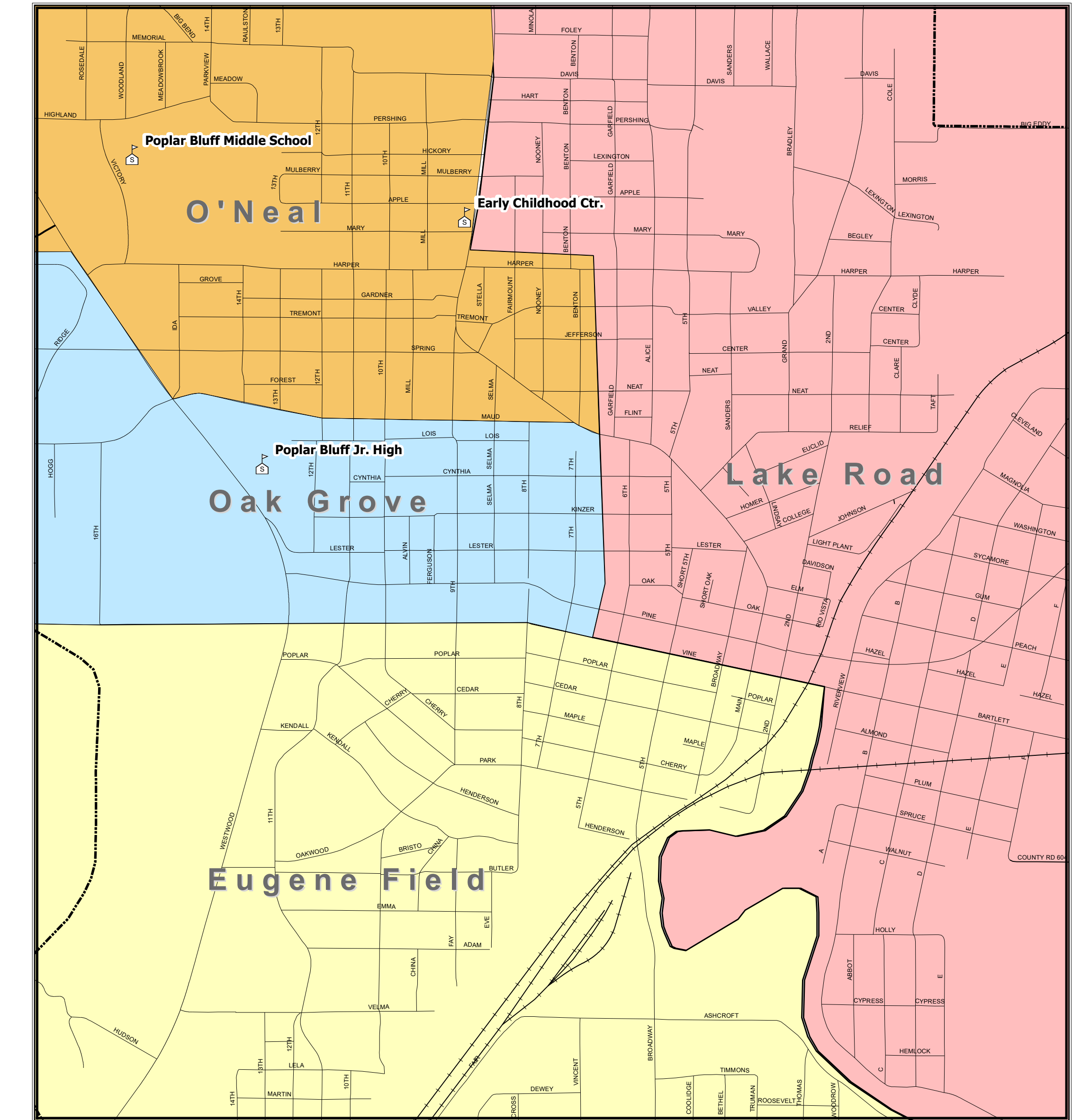
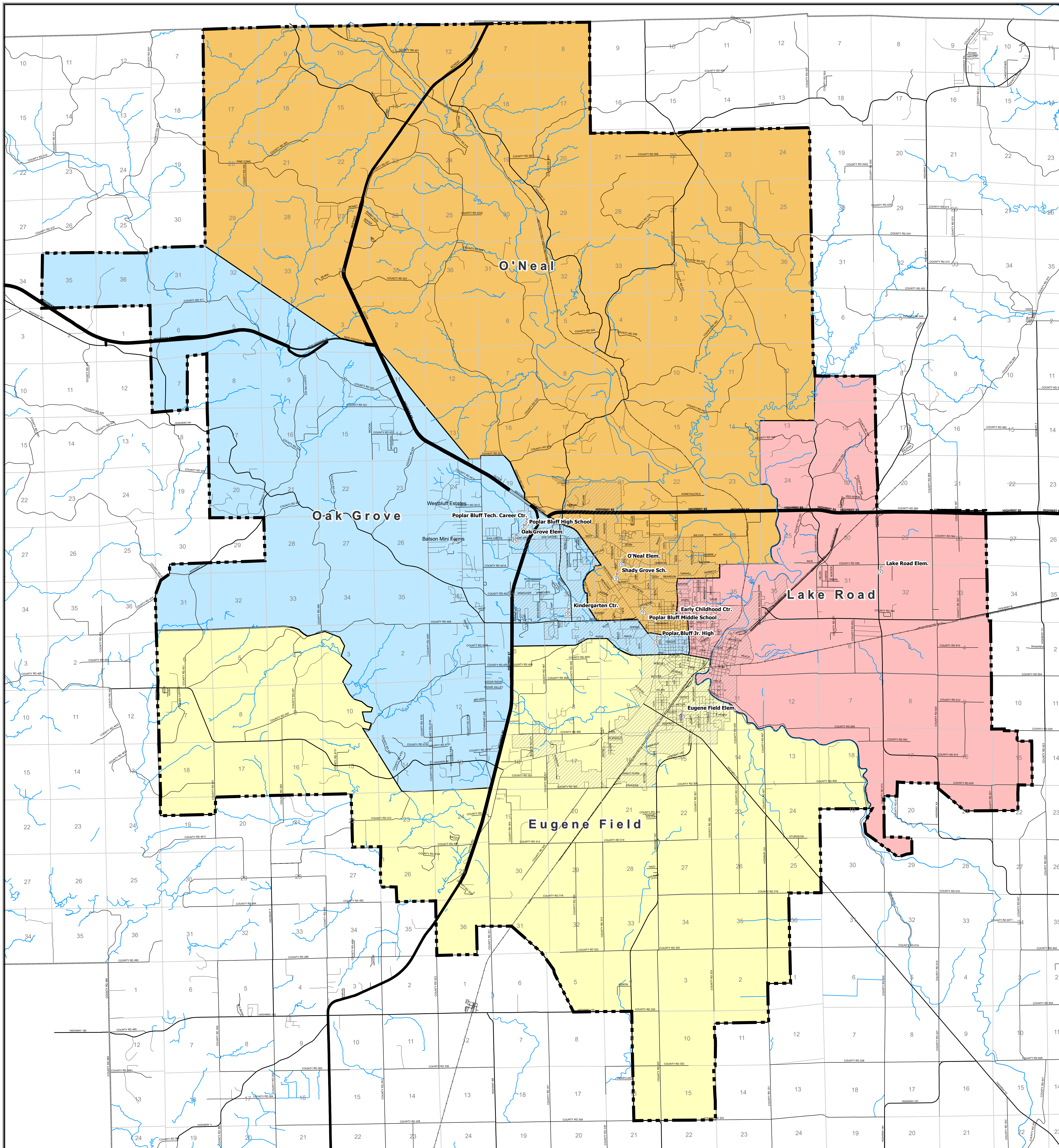


012-109 Poplar Bluff R-1 School District



- Legend**
- Poplar Bluff R-1 School District
 - CITY LIMITS
 - SCHOOLS
 - MAJOR RIVERS
 - COUNTY BOUNDARY
- Roads**
- CITY ROAD
 - COUNTY ROAD
 - PRIVATE LANE
 - STATE LETTERED HIGHWAY
 - STATE NUMBERED HIGHWAY
 - SUBDIVISION
 - US HIGHWAY
 - <all other values>
 - RAILROADS
- School Districts**
- Eugene Field Elem.
 - Lake Road Elem.
 - O'Neal Elem.
 - Oak Grove Elem.



Revision Date: 11/5/2015

Prepared by:
SMITH & CO.
ENGINEERS & ARCHITECTS
901 VINE STREET, P.O. BOX 72
POPLAR BLUFF, MISSOURI 63902
(573) 785-9621 FAX: (573) 785-2651
WWW.SHSMITHCO.COM

